

The logo for the City of Grand Junction, Colorado, features the words "CITY OF" in small blue capital letters above "Grand Junction" in a large, bold, green serif font. Below "Grand Junction" is the word "COLORADO" in blue capital letters. A blue graphic element consisting of three curved lines resembling a river or water flow is positioned to the left of the text.

CITY OF  
**Grand Junction**  
COLORADO

WATER SERVICES DIVISION

The background of the report cover is a scenic landscape photograph. It shows a wide, calm river or lake in the foreground, reflecting the surrounding environment. The middle ground consists of rolling hills and valleys with sparse, dry vegetation. In the background, a range of mountains is visible, with some peaks covered in snow under a clear blue sky.

**2020**

**City of Grand Junction  
Water Quality Report**

# GRAND JUNCTION CITY OF 2021 Drinking Water Quality Report

## Covering Data for Calendar Year 2020

*Public Water System ID: CO0139321*

**Esta es información importante. Si no la pueden leer, necesitan que alguien se la traduzca.**

We are pleased to present to you this year's water quality report. Our constant goal is to provide you with a safe and dependable supply of drinking water. Please contact Mark Ritterbush at 970-256-4185 with any questions or for public participation opportunities that may affect water quality. **Please see the water quality data from our wholesale system(s) (either attached or included in this report) for additional information about your drinking water.**

### General Information

All drinking water, including bottled water, may reasonably be expected to contain at least small amounts of some contaminants. The presence of contaminants does not necessarily indicate that the water poses a health risk. More information about contaminants and potential health effects can be obtained by calling the Environmental Protection Agency's Safe Drinking Water Hotline (1-800-426-4791) or by visiting [epa.gov/ground-water-and-drinking-water](http://epa.gov/ground-water-and-drinking-water).

Some people may be more vulnerable to contaminants in drinking water than the general population. Immunocompromised persons such as persons with cancer undergoing chemotherapy, persons who have undergone organ transplants, people with HIV-AIDS or other immune system disorders, some elderly, and infants can be particularly at risk of infections. These people should seek advice about drinking water from their health care providers. For more information about contaminants and potential health effects, or to receive a copy of the U.S. Environmental Protection Agency (EPA) and the U.S. Centers for Disease Control (CDC) guidelines on appropriate means to lessen the risk of infection by Cryptosporidium and microbiological contaminants call the EPA Safe Drinking Water Hotline at (1-800-426-4791).

The sources of drinking water (both tap water and bottled water) include rivers, lakes, streams, ponds, reservoirs, springs, and wells. As water travels over the surface of the land or through the ground, it dissolves naturally occurring minerals and, in some cases, radioactive material, and can pick up substances resulting from the presence of animals or from human activity. Contaminants that may be present in source water include:

- **Microbial contaminants:** viruses and bacteria that may come from sewage treatment plants, septic systems, agricultural livestock operations, and wildlife.
- **Inorganic contaminants:** salts and metals, which can be naturally-occurring or result from urban storm water runoff, industrial or domestic wastewater discharges, oil and gas production, mining, or farming.
- **Pesticides and herbicides:** may come from a variety of sources, such as agriculture, urban storm water runoff, and residential uses.
- **Radioactive contaminants:** can be naturally occurring or be the result of oil and gas production and mining activities.
- **Organic chemical contaminants:** including synthetic and volatile organic chemicals, which are byproducts of industrial processes and petroleum production, and also may come from gas stations, urban storm water runoff, and septic systems.

In order to ensure that tap water is safe to drink, the Colorado Department of Public Health and Environment prescribes regulations limiting the amount of certain contaminants in water provided by public water systems. The Food and Drug Administration regulations establish limits for contaminants in bottled water that must provide the same protection for public health.

### Lead in Drinking Water

If present, elevated levels of lead can cause serious health problems (especially for pregnant women and young children). It is possible that lead levels at your home may be higher than other homes in the community as a result of materials used in your home’s plumbing. If you are concerned about lead in your water, you may wish to have your water tested. When your water has been sitting for several hours, you can minimize the potential for lead exposure by flushing your tap for 30 seconds to 2 minutes before using water for drinking or cooking. Additional information on lead in drinking water, testing methods, and steps you can take to minimize exposure is available from the Safe Drinking Water Hotline (1-800-426-4791) or at [epa.gov/safewater/lead](http://epa.gov/safewater/lead).

### Source Water Assessment and Protection (SWAP)

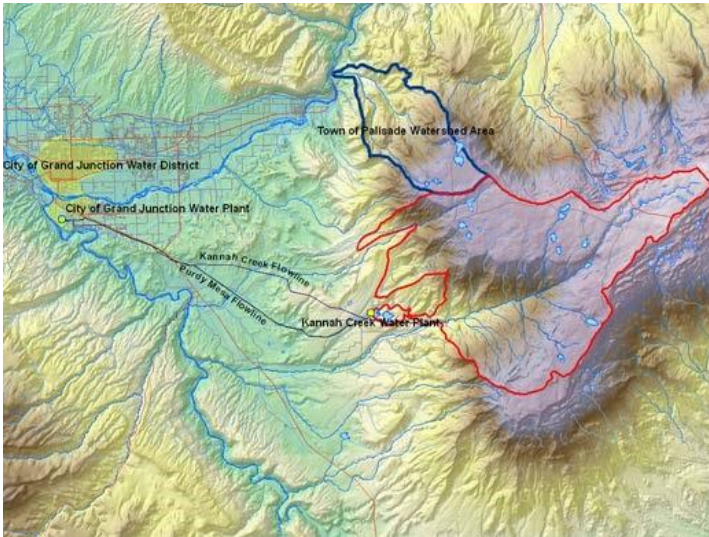
The Colorado Department of Public Health and Environment may have provided us with a Source Water Assessment Report for our water supply. For general information or to obtain a copy of the report please visit [wqcdcompliance.com/ccr](http://wqcdcompliance.com/ccr). The report is located under “Guidance: Source Water Assessment Reports”. Search the table using 139321, GRAND JUNCTION CITY OF, or by contacting Mark Ritterbush at 970-256-4185. The Source Water Assessment Report provides a screening-level evaluation of potential contamination that *could* occur. It *does not* mean that the contamination *has or will* occur. We can use this information to evaluate the need to improve our current water treatment capabilities and prepare for future contamination threats. This can help us ensure that quality finished water is delivered to your homes. In addition, the source water assessment results provide a starting point for developing a source water protection plan. Potential sources of contamination in our source water area are listed on the next page.

Please contact us to learn more about what you can do to help protect your drinking water sources, any questions about the Drinking Water Quality Report, to learn more about our system, or to attend scheduled public meetings. We want you, our valued customers, to be informed about the services we provide and the quality water we deliver to you every day.

### Our Water Sources

<u>Source</u>	<u>Source Type</u>	<u>Water Type</u>	<u>Potential Source(s) of Contamination</u>
GUNNISON RIVER PUMP STATION	Intake	Surface Water	Based upon the Surface Water Assessment Report completed by the CDPH&E, the potential sources of contamination in our source water come from residential areas, recreation grasses, mining activities, agriculture such as grains, pastures, orchards and vineyards, as well as forests, septic systems, oil and gas wells and transportation corridors. Other sources include EPA superfund sites, abandoned and contaminated sites, hazardous waste generators, quarries, strip mines, gravel pits, chemical inventory and storage sites, toxic inventory sites, storage tanks, solid waste sites, and animal feeding.
SOMERVILLE FLOWLINE	Intake	Surface Water	
MASTER METER FROM UTE CO0139791	Consecutive Connection	Surface Water	
MASTER METER FROM CLIFTON CO0139180	Consecutive Connection	Surface Water	
KANNAH CREEK FLOWLINE	Intake	Surface Water	
PURDY MESA FLOWLINE	Intake	Surface Water	





The Grand Junction and Kannah Creek water plants are supplied by surface water from the Kannah Creek watershed. This pristine source starts out as snowmelt and precipitation and covers 200 square miles on the top and west side of the Grand Mesa. Principal streams and storage areas in the watershed are Kannah Creek, North Fork of Kannah Creek, Brandon Ditch, Juniata Reservoir and Purdy Mesa Reservoir.

The City of Grand Junction is proud to use Grand Mesa water as its source. Since we are the first users of this water, susceptibility to man-made contaminants is minimal. To further maintain low susceptibility to contaminants, boats and float craft are not allowed on the City Reservoirs. This policy allows the City to control invasive biologic species from hitchhiking on your crafts as well as mitigating uncontrolled human contact. The City also retains emergency water rights from both the Clifton Water District and Ute Water Conservancy District.

### Terms and Abbreviations

- **Maximum Contaminant Level (MCL)** – The highest level of a contaminant allowed in drinking water.
- **Treatment Technique (TT)** – A required process intended to reduce the level of a contaminant in drinking water.
- **Health-Based** – A violation of either a MCL or TT.
- **Non-Health-Based** – A violation that is not a MCL or TT.
- **Action Level (AL)** – The concentration of a contaminant which, if exceeded, triggers treatment and other regulatory requirements.
- **Maximum Residual Disinfectant Level (MRDL)** – The highest level of a disinfectant allowed in drinking water. There is convincing evidence that addition of a disinfectant is necessary for control of microbial contaminants.
- **Maximum Contaminant Level Goal (MCLG)** – The level of a contaminant in drinking water below which there is no known or expected risk to health. MCLGs allow for a margin of safety.
- **Maximum Residual Disinfectant Level Goal (MRDLG)** – The level of a drinking water disinfectant, below which there is no known or expected risk to health. MRDLGs do not reflect the benefits of the use of disinfectants to control microbial contaminants.
- **Violation (No Abbreviation)** – Failure to meet a Colorado Primary Drinking Water Regulation.
- **Formal Enforcement Action (No Abbreviation)** – Escalated action taken by the State (due to the risk to public health, or number or severity of violations) to bring a non-compliant water system back into compliance.
- **Variance and Exemptions (V/E)** – Department permission not to meet a MCL or treatment technique under certain conditions.
- **Gross Alpha (No Abbreviation)** – Gross alpha particle activity compliance value. It includes radium-226, but excludes radon 222, and uranium.

- **Picocuries per liter (pCi/L)** – Measure of the radioactivity in water.
- **Nephelometric Turbidity Unit (NTU)** – Measure of the clarity or cloudiness of water. Turbidity in excess of 5 NTU is just noticeable to the typical person.
- **Compliance Value (No Abbreviation)** – Single or calculated value used to determine if regulatory contaminant level (e.g. MCL) is met. Examples of calculated values are the 90<sup>th</sup> Percentile, Running Annual Average (RAA) and Locational Running Annual Average (LRAA).
- **Average (x-bar)** – Typical value.
- **Range (R)** – Lowest value to the highest value.
- **Sample Size (n)** – Number or count of values (i.e. number of water samples collected).
- **Parts per million = Milligrams per liter (ppm = mg/L)** – One part per million corresponds to one minute in two years or a single penny in \$10,000.
- **Parts per billion = Micrograms per liter (ppb = ug/L)** – One part per billion corresponds to one minute in 2,000 years, or a single penny in \$10,000,000.
- **Not Applicable (N/A)** – Does not apply or not available.
- **Level 1 Assessment** – A study of the water system to identify potential problems and determine (if possible) why total coliform bacteria have been found in our water system.
- **Level 2 Assessment** – A very detailed study of the water system to identify potential problems and determine (if possible) why an E. coli MCL violation has occurred and/or why total coliform bacteria have been found in our water system on multiple occasions.



### Detected Contaminants

GRAND JUNCTION CITY OF routinely monitors for contaminants in your drinking water according to Federal and State laws. The following table(s) show all detections found in the period of January 1 to December 31, 2020 unless otherwise noted. The State of Colorado requires us to monitor for certain contaminants less than once per year because the concentrations of these contaminants are not expected to vary significantly from year to year, or the system is not considered vulnerable to this type of contamination. Therefore, some of our data, though representative, may be more than one year old. Violations and Formal Enforcement Actions, if any, are reported in the next section of this report.

**Note:** Only detected contaminants sampled within the last 5 years appear in this report. If no tables appear in this section then no contaminants were detected in the last round of monitoring.

<b>Disinfectants Sampled in the Distribution System</b> <b>TT Requirement: At least 95% of samples per period (month or quarter) must be at least 0.2 ppm OR</b> <b>If sample size is less than 40 no more than 1 sample is below 0.2 ppm</b> <b>Typical Sources: Water additive used to control microbes</b>						
Disinfectant Name	Time Period	Results	Number of Samples Below Level	Sample Size	TT Violation	MRDL
Chlorine	December, 2020	<u>Lowest period</u> percentage of samples meeting TT requirement: 100%	0	50	No	4.0 ppm

Lead and Copper Sampled in the Distribution System								
Contaminant Name	Time Period	90 <sup>th</sup> Percentile	Sample Size	Unit of Measure	90 <sup>th</sup> Percentile AL	Sample Sites Above AL	90 <sup>th</sup> Percentile AL Exceedance	Typical Sources
Copper	07/07/2020 to 09/23/2020	0.38	38	ppm	1.3	0	No	Corrosion of household plumbing systems; Erosion of natural deposits
Lead	07/07/2020 to 09/23/2020	8.5	38	ppb	15	2	No	Corrosion of household plumbing systems; Erosion of natural deposits

Disinfection Byproducts Sampled in the Distribution System									
Name	Year	Average	Range Low – High	Sample Size	Unit of Measure	MCL	MCLG	MCL Violation	Typical Sources
Total Haloacetic Acids (HAA5)	2020	33.26	22 to 46.3	16	ppb	60	N/A	No	Byproduct of drinking water disinfection
Total Trihalomethanes (TTHM)	2020	42.98	33.57 to 54.5	16	ppb	80	N/A	No	Byproduct of drinking water disinfection

Summary of Turbidity Sampled at the Entry Point to the Distribution System						
Contaminant Name	Sample Date	Level Found		TT Requirement	TT Violation	Typical Sources
Turbidity	Date/Month: Mar	<u>Highest single</u> measurement: 0.1 NTU		Maximum 1 NTU for any single measurement	No	Soil Runoff
Turbidity	Month: Dec	<u>Lowest monthly</u> percentage of samples meeting TT requirement for our technology: 100 %		In any month, at least 95% of samples must be less than 0.3 NTU	No	Soil Runoff

Radionuclides Sampled at the Entry Point to the Distribution System									
Contaminant Name	Year	Average	Range Low – High	Sample Size	Unit of Measure	MCL	MCLG	MCL Violation	Typical Sources
Combined Uranium	2020	0.3	0.3 to 0.3	1	ppb	30	0	No	Erosion of natural deposits

Inorganic Contaminants Sampled at the Entry Point to the Distribution System									
Contaminant Name	Year	Average	Range Low – High	Sample Size	Unit of Measure	MCL	MCLG	MCL Violation	Typical Sources
Fluoride	2020	0.62	0.62 to 0.62	1	ppm	4	4	No	Erosion of natural deposits; water additive which promotes strong teeth; discharge from fertilizer and aluminum factories
Nitrate	2020	0.11	0.11 to 0.11	1	ppm	10	10	No	Runoff from fertilizer use; leaching from septic tanks, sewage; erosion of natural deposits

Secondary Contaminants**						
**Secondary standards are non-enforceable guidelines for contaminants that may cause cosmetic effects (such as skin, or tooth discoloration) or aesthetic effects (such as taste, odor, or color) in drinking water.						
Contaminant Name	Year	Average	Range Low – High	Sample Size	Unit of Measure	Secondary Standard
Sodium	2020	10	10 to 10	1	ppm	N/A

### Unregulated Contaminants\*\*\*

EPA has implemented the Unregulated Contaminant Monitoring Rule (UCMR) to collect data for contaminants that are suspected to be present in drinking water and do not have health-based standards set under the Safe Drinking Water Act. EPA uses the results of UCMR monitoring to learn about the occurrence of unregulated contaminants in drinking water and to decide whether or not these contaminants will be regulated in the future. We performed monitoring and reported the analytical results of the monitoring to EPA in accordance with its Third Unregulated Contaminant Monitoring Rule (UCMR3). Once EPA reviews the submitted results, the results are made available in the EPA's National Contaminant Occurrence Database (NCOD) (<http://www.epa.gov/dwucmr/national-contaminant-occurrence-database-ncod>) Consumers can review UCMR results by accessing the NCOD. Contaminants that were detected during our UCMR3 sampling and the corresponding analytical results are provided below.

#### Sampled at Entry Point of Distribution system (Treatment Plant)

CHROMIUM-6	2014-2015	0.040	0.000 – 0.060	4	ug/L
STRONTIUM	2014-2015	134.65	114.4 – 165.5	4	ug/L
VANADIUM	2014-2015	0.638	0.449 – 0.763	4	ug/L
CHLORATE	2014-2015	151.1	114.8 – 175.7	4	ug/l
Manganese	2019	8.25	2.5 – 14	2	ug/l

#### Sampled in Distribution System

CHROMIUM-6	2014-2015	0.043	0.000 – 0.069	4	ug/L
STRONTIUM	2014-2015	135.1	124.1 – 163.4	4	ug/L
VANADIUM	2014-2015	0.664	0.443 – 0.818	4	ug/L
CHLORATE	2014-2015	152.4	113.6 – 195.3	4	ug/l
Bromochloroacetic Acetic	2019	1.71	1.2 – 2.1	8	ug/l
Bromodichloroacetic Acid	2019	2.07	1.7 – 2.3	8	ug/l
Dichloroacetic Acid	2019	14.375	19 – 28	8	ug/l
Trichloroacetic acid	2019	24.75	19 – 29	8	ug/l
Total Organic Carbon	2020	2000	1800-2200	2	ug/L

\*\*\*More information about the contaminants that were included in UCMR3 monitoring can be found at: <http://www.drinktap.org/water-info/whats-in-my-water/unregulated-contaminant-monitoring-rule.aspx>. Learn more about the EPA UCMR at: <http://www.epa.gov/dwucmr/learn-about-unregulated-contaminant-monitoring-rule> or contact the Safe Drinking Water Hotline at (800) 426-4791 or <http://water.epa.gov/drink/contact.cfm>.





**Violations, Significant Deficiencies, and Formal Enforcement Actions**

**No Violations or Formal Enforcement Actions**