

SPRINKLER LEAKS

- To protect against freeze damage, disconnect hoses from the hose bibs on the outside faucets.
- Winterize the sprinkler system as specified in the system's instructions. For more information about winterizing a sprinkler system, contact an irrigation specialist.

After mowing, check for any damaged sprinkler heads.

GENERAL





In case of emergencies, knowing the location of important valves will result in quick action and reduce water losses or possible damage to your home.

- Locate water shut-off valves for washers, dishwashers, and refrigerators with ice- makers.
- Find the water shut-off valve that turns the water off for the entire house. If you do not have a shut-off valve that turns water off to the entire house you should contact a licensed plumber to have one installed. This valve will also help isolate potential leaks by determining if leak is inside home or in water service line to the home.
- It is the customer's responsibility to repair any leaks on their water service line between the water meter and the house.

In case of emergencies, contact the City of Grand Junction Water Department at 244-1572 from 7:30 a.m. – 4:30 p.m. Monday through Friday, or 242-1234 after-hours, weekends or holidays.

EVEN SMALL LEAKS ADD UP

The amount of water wasted by a leak from an inside faucet at 15-20 psi could be:

Diameter of Leaks (inches)	Gallons of Water Wasted Per Day	Cost of Lost Water Per Month
 1/8	3,096	\$172.82
 1/16	693	\$38.46
 1/32	120	\$6.66
 1/64	66	\$3.66



For more ways to save water and reduce your water bills contact:

City of Grand Junction Water Department
2553 River Road
Grand Junction, CO 81505
Or call 244-1572

HOW TO FIND COSTLY WATER LEAKS



*CITY OF
GRAND JUNCTION
WATER DEPARTMENT*

A leaky faucet or running toilet can be irritating. They also waste a great deal of water and can increase your water bill. A dripping faucet can waste 2,000 gallons a year. Undetected toilet leaks may waste over 50 gallons of water per day!

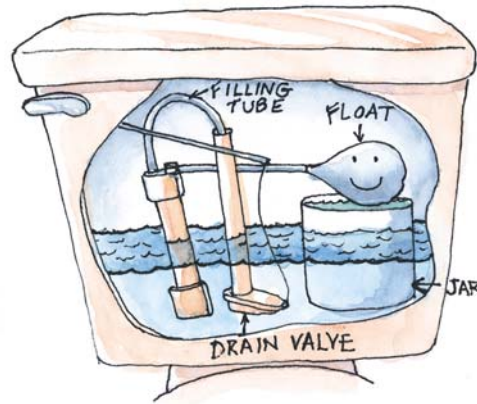
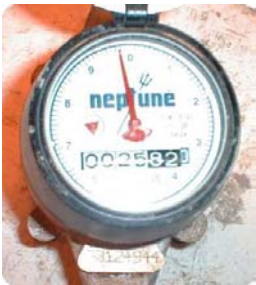
HOW TO FIND LEAKS

Most leaks are easy to find, but some can go undetected. If you suspect a leak somewhere in your water service but can't locate it, use this simple tip.

Turn off all the water fixtures. Then check the water meter. If the dial or the leak indicator (usually the small red triangle) on your water meter is moving you have a wasteful leak somewhere on your home side of the water meter.

To determine if the leak is in the water service line to your home or if it is in your home you will need to shut off the isolation valve that will shut off water to the entire house. Usually this is in the basement or crawl space where your water line comes in from the outside. After this is done, recheck the water meter to see if leak indicator is still moving. If it is, the leak is in your water service line to your home.

To calculate how much a leak may be leaking you may also read the meter in the morning, read it again in the evening when you get home.



To conserve water place a jar or brick in toilet tank to displace water.

FAUCET AND BATHTUB LEAKS

Detecting leaky faucets and bathtubs is easy. Fixing a leaky faucet or bathtub can be almost as easy.

- ☞ Most faucet leaks are plainly visible as drips coming out of the faucet aerator. Occasionally faucets may leak in other places such as the on/off handle or in places below the basin. Try to tighten any fittings that leak a quarter or half turn. Be careful not to over tighten.
- ☞ Most bathtub leaks are plainly visible as drips coming out of the tub spout. Occasionally bathtub faucets may leak in other places such as the hot or cold water handles.
- ☞ Bathtubs and faucets typically leak because of old gaskets or O-rings and corroded valve seats. You may need to contact a licensed plumber to repair these things.

TOILET LEAKS

A "running" toilet can be heard. But many times, toilet leaks can not be detected, unless the following steps are taken:

- ☞ Check for leaks by putting a few drops of food coloring into the tank. Wait to see if "color" shows up in the bowl without flushing. If color appears in ten minutes, the drain valve (flapper cover) or the support assembly may need to be replaced.
- ☞ The drain valve (flapper cover) should drop squarely into the drain opening at the bottom of the tank. Check the drain valve to see if it is obstructed from a good seal by grit or debris, or if it is -worn and in need of replacement.
- ☞ Check the flush handle to make sure that it is not sticking into the flush position.
- ☞ Be sure that the water level in the tank is at least **1/2"** below the top of the overflow or filling tube. To adjust, gently bend the float arm to lower the water level.
- ☞ Inspect overflow tubes for holes located below the water line. Replace the tube if any leaks are found.
- ☞ If the water continues to run when the toilet tank is full, consult a licensed plumber.