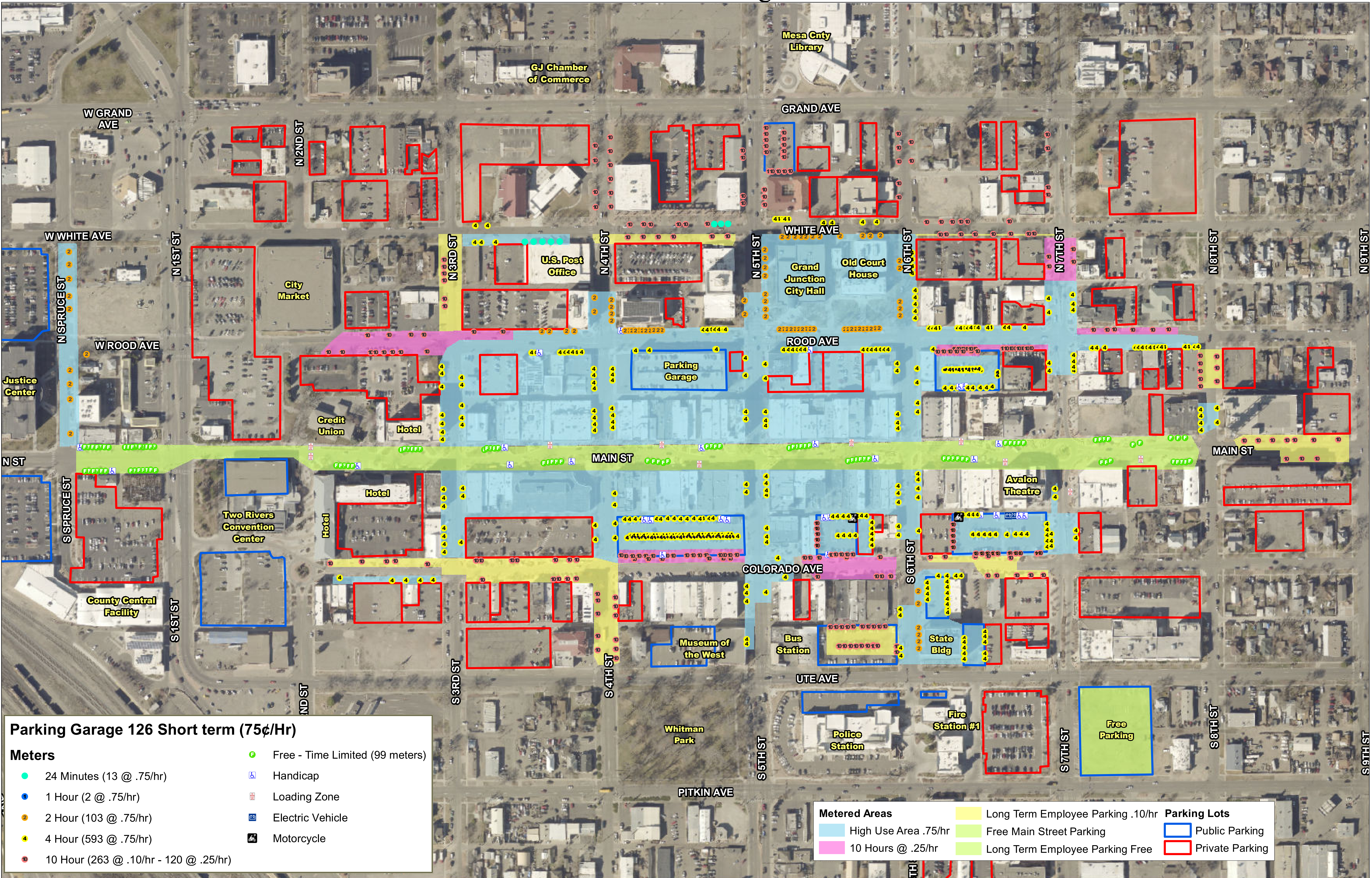


Downtown Parking Meters



Parking Garage 126 Short term (75¢/Hr)

Meters

- 24 Minutes (13 @ .75/hr)
- 1 Hour (2 @ .75/hr)
- 2 Hour (103 @ .75/hr)
- 4 Hour (593 @ .75/hr)
- 10 Hour (263 @ .10/hr - 120 @ .25/hr)

- Free - Time Limited (99 meters)
- ♿ Handicap
- Ⓜ Loading Zone
- ⚡ Electric Vehicle
- 🏍 Motorcycle

Metered Areas

- High Use Area .75/hr
- 10 Hours @ .25/hr
- Long Term Employee Parking .10/hr
- Free Main Street Parking
- Long Term Employee Parking Free

Parking Lots

- Public Parking
- Private Parking